



MAXION®

...a passion for perfection

DRILLING & TAPPING SOLUTIONS



AMT PRECISION DRILLING & TAPPING MACHINES



**Drilling Machine
with Auto Feed
(A)**



**Drilling & Tapping Machine
With Variable Frequency
Drive (VFD)**



**High Speed Micro Drilling
Machine
(BT)**

Description	Units	DB/DC-23A	DB/DC-28A	TDB/TDC-23(VFD)	TDB/TDC-28(VFD)	BT 6	BT 12
Drilling capacity in steel (MS)	mm	Ø15	Ø20	Ø4 -20	Ø4 -25	Ø0.5 -6	Ø4 -12
Tapping capacity in steel (MS)	mm	-	-	M4 -M12	M4 -M14	-	-
Spindle Taper	MT	MT2	MT3	MT2	MT3	B12	MT 1
Spindle Travel for Drilling	mm	120	120	120	120	55	50
Spindle Travel for Tapping	mm	-	-	100	100	-	-
No. of Spindle Speed	Nos.	8	8	-	-	8	6
Spindle Speed	Rpm	112 -2800	112 -2800	150 -2400	150 -2400	1000 -12000	870 -4660
VFD	Make	-	-	ABB (Model-ACS 150)	ABB (Model-ACS 150)	-	-
Column Diameter	mm	80	80	80	80	75	75
Spindle to Column	mm	240	240	240	240	180	180
Spindle face to work Table	mm	300/600	300/600	300/600	300/600	135/380	135/380
T Slot on Work Table(SizeXQty)	mm	12 x2 Nos (M10)	12 x2 Nos (M10)	12 x2 Nos (M10)	12 x2 Nos (M10)	12 x2 Nos (M10)	12 x2 Nos (M10)
Center Table Working area	mm	235 x235	235 x235	235 x235	235 x235	255 x 225	255 x225
Spindle face to base Table	mm	600/1170	600/1170	600/1170	600/1170	135/380	135/380
T Slot on Base Table(SizeXQty)	mm	14 x2 Nos (M12)	14 x2 Nos (M12)	14 x2 Nos (M12)	14 x2 Nos (M12)	-	-
Base Table Working area	mm	265 x250	265 x250	265 x250	265 x250	-	-
Table surface	mm	240 x240	240 x240	240 x240	240 x240	220 -285	220 -285
Motor Power	HP	1	2	2 (Inverter Duty)	3 (Inverter Duty)	0.5 /0.75	0.5/0.75
Net Waight (Approx.)	kgs	165/180	165/180	165/180	165/180	75	75
Dimensions (WxDxH)	mm	380x700x1130 480x740x1700	380x700x1130 480x740x1700	380x700x1130 480x740x1700	380x700x1130 480x740x1700	890x520x1270	890x520x1270



- Delta make PLC with HMI
- Provision for drilling single & continuous cycle
- Helical gear box with stepper motor
- Peak drilling cycle available

- Digital Display for RPM
- Auto reversal tapping Facility
- Adjustment of speed via. potentiometer
- Machine is suitable for Thermal drilling operations.
- Inverter Duty motor with Force Cooling.

Machine Features :

- Sensitive precision drilling machine with very high concentricity, especially for electronic & precision engineering
- Spindle run out accuracy maintained within 20 microns at spindle nose
- Column adjustable via rack & pinion arrangement.
- Dual speed motor
- Mode of spindle feed for drilling - Manual
- Machine Comes with Standard Cabinet

Note : These model are also available in column type



AMT PRECISION DRILLING & TAPPING MACHINES

- High precision spindle made from alloy steel, hardened & precision ground.
- Graded casting
- Alloy steel gears.
- Spindle auto reversal for tapping cycle.
- Robust construction.
- Motor with electrical fitments is a standard feature.
- Machine lamp - a standard feature.
- Stringent quality checks at every level.
- Test chart is provided with every machine.
- Spindle run-out accuracy is within 20 microns.
- Easy belt changing through rack and pinion mechanism.
- Dynamically balanced V-belt pulleys guarantee of secure power transmission even in the lower rotation speeds.
- Machine is recommended for **Thermal Drilling Operation**.

Description	Units	DB/DC-23	TDB/TDC-23	DB/DC-28	TDB/TDC-28	EQ-16TD
Drilling capacity in steel (MS)	mm	23	23	28	28	16/18
Tapping capacity in steel (MS)	mm	-	M14	-	M16	M8/10
Spindle Taper	MT	MT2	MT2	MT3	MT3	MT-2
Spindle Stroke Max for Drilling	mm	120	120	120	120	120
Spindle Stroke Max for Tapping	mm	-	100	-	100	100
No. of Spindle Speed	Nos.	8	8	8	8	8
Spindle Speed	Rpm	112-2800	56-1400	112-2800	56-1400	56-1400
Mode of spindle feed for drilling	Mode	Manual	Manual	Manual	Manual	Manual
Mode of spindle feed for tapping	Mode	-	Manual with Auto Reversal	-	Manual with Auto Reversal	Manual
Column Diameter	mm	80	80	80	80	80
Spindle to Column	mm	240	240	240	240	240
Spindle face to work Table	mm	300/600	300/600	300/600	300/600	300/600
T Slot on Work Table(SizeXQty)	mm	12 x2 Nos (M10)	12 x2 Nos (M10)	12 x2 Nos (M10)	12 x2 Nos (M10)	12 x2 Nos (M10)
Spindle face to base Table	mm	600/1150	600/1150	600/1150	600/1150	600
Center Table Working area	mm	235 x235	235 x235	235 x235	235 x235	235 x235
Base Table Working area	mm	265 x250	265 x250	265 x250	265 x250	265 x250
T Slot on Base Table(SizeXQty)	mm	14 x2 Nos (M12)	14 x2 Nos (M12)	14 x2 Nos (M12)	14 x2 Nos (M12)	14 x2 Nos (M12)
Motor Power	HP	1	1	2	1.5	0.5
Net Weight (Approx.)	kgs	165/180	167/182	165/180	167/182	150
Dimensions (WxDxH)	mm	380x700x1130 480x740x1700	380x700x1130 480x740x1700	380x700x1130 480x740x1700	380x700x1130 480x740x1700	308x700x1130

* Spindle auto-reversal facility to enable tapping operation.

** Motor power can be increased upto 3 HP to enable **Thermal Drilling Operations**.

Available Accessories : Anti-vibration mounts, External coolant attachment, Albrecht key-less drill chuck, Clamping vice, Reducer sleeve, Cabinet are available at extra cost.

Note : B Indicate Bench Type Machine
C Indicate Column Type Machine



BT 18 GL

High performance tapping machine with lead screw. Safety arrangement for prevention of tool breakage. Programme for tapping single and continuous cycles, programmable tapping depth, piece counter, LED machine light and electronically controlled motor braking for single cycle operation. Simple replacement of lead screw by means of quick coupling.

Technical data	BT 18 GL
Tapping capacity	M3- M10
Threads per hour	1,000
Standard capacity	15 mm
Spindle	MT 2
Depth of thread	60 mm
Spindle travel	100 mm
Spindle to column	250 mm
Spindle / Table	185-541 mm
Table surface	340 x 445 mm
T-slot width	12 mm
Column diameter	90 mm
Total height	1,050 mm
Weight	120 kg
Special motor	0.55 kW
Mains connection	400 V / 50 Hz
4 fixed spindle rpm steps	320 rpm
	560 rpm
	1,000 rpm
	1,600 rpm
Standard packaging	89x52x127 cm

Optional / Accessories

- Lead screw



- Tap holder
- Bottoming release switch
- Force ventilated motor
- Column longer by 200 mm for BT 18 GL
- Foot impulse switch
- Minimum quantity lubrication system
- Floor units



UNIMAX 2S TAP

Very powerful, all-purpose drilling machine with wide range of application. Three-phase motor, integrated tapping unit as standard. LED machine light and programmable tapping depth. Rpm and drilling depth are shown in the display.

Technical data	UNIMAX 2 TAP
Constant capacity in E 335	18 mm
Standard capacity	20 mm
Tapping capacity	M 16 in S235
Spindle	MT 2
Spindle travel	100 mm
Spindle to column	225 mm
Spindle / Table	55 to 880 mm
Table surface	450 x 315 mm
T-slot width	14 mm
Column diameter	90 mm
Total height	max 1,745 mm
Weight	170 kg
Frequency-controlled motor	1.5 kW
Mains connection	230 V / 50 Hz
LED machine light	included
Stepless Spindle rpm	
Drilling Range A	100-2,000 rpm
Drilling Range B	200-4,000 rpm
Tapping Range A	100-500 rpm
Tapping Range B	200-1,000 rpm
Standard packaging	220x74x125 cm

Optional / Accessories

- Tap holder



- Minimum quantity lubrication system



SPEEDMAX

Precision drilling machine for drillings starting from 0.2 mm. Variable frequency drive with digital RPM indicator. Very high spindle concentricity <0.005 mm. Optional visualization by camera and collet set are available at extra cost.

Technical data	SPEEDMAX
Standard capacity in E 335	0.2 - 4 mm
Spindle / Collet	ER 11
Spindle travel	55 mm
Spindle to column	215 mm
Spindle to baseplate	60 to 345 mm
Table surface	280 x 475 mm
Total Height	780 mm
Weight	51 kg
Motor	0.75 kW
Stepless spindle rpm	700-24,000 rpm
Mains connection	230 V / 50-60 Hz

Optional / Accessories

- Visual display camera
- Collet set



Manufactured by

MAXION®

MAXION Jänsch & Ortlepp GmbH

Web : www.maxion.de



MAXTAP / JOBTAP

Reliable tapping machine for quality-orientated tapping respectively thread moulding M1 to M18, screw in of thread inserts, rethreading and postforming as well as checking already manufactured threads. Thanks to the menu guided operation machine parameters can be entered fast and uncomplicated. For each particular machining process the ideal rotation speeds, drilling depth as well as the minimum and maximum tapping torque can be entered. If the machine leaves these parameters, the thread will be identified as defective. By means of an integrated piece counter an overview of already processed workpieces is provided everytime. For analysis and control of tapping processes the machine can be connected to a PC.

Maxtap / Jobtap	G5	G8
Tapping performance		
X5CrNi189/1.4435	M1-M5	M2.5-M8
9SMn28/1.0715	M1-M6	M2.5-M10
AlCuMgPb/3.1645	M1-M6	M2.5-M12
Max.tapping depth / stroke	45/65 mm	75/85mm
Insert holder	SWS 0	SWS 1
quick change system	incl.5 inserts	incl.6 inserts
Insert holder / spindle	B 10	B 12
Distance tool holder/work table	0-280 mm	0-400 mm
Torque range Mz (stepless)	5-220 Ncm	50-700 Ncm
Spindle speed range (stepless)	250-2,200 rpm	300-3,000 rpm
Width	323 mm	312 mm
depth	510 mm	530 mm
Height	780 mm	930 mm
Weight net	51.4 kg	61.7 kg
Column (adjustable with hand wheel)	600 mm	750 mm
base plate in mm	280x475x50	280x475x50
2 x T-slot	M 12x14	M 12x14
Mains voltage	230 V/50-60 Hz	230 V/50-60 Hz
Power consumption	300 W	2,900 W



BS 25 AVST

Powerful and precise universal column drilling machine with stepless drive mechanism. Electro-magnetic clutch for feed. Table adjustable via rack and pinion, rotatable around column. Motor protection, Depth and RPM indicator. Machine base with T-slots.

Technical data	BS 25 AVST
Constant Capacity in St 60	25 mm
Standard capacity	32 mm
Spindle	MT 3
Automatic Feed	0.1-0.16-0.25mm/turn
Spindle Travel	120 mm
Spindle to Column	260 mm
Spindle to Table	90 to 760 mm
Spindle to base	1320 mm
Table Surface	500 x 365 mm
Column Diameter	110 mm
Weight	285 kg
Pole Changing Motor	0.8/1.5 KW
Stepless Rotation Speeds	120-2200rpm (approx.)
Mode of spindle travel	Manual & Auto
T-slot on work table (Size & Qty.)	(14 mm x 2Nos.)
T-slot on Base (Size & Qty.)	(14 mm x 2Nos.)
Dimension (LxWxH)	900x600x1850mm
Available with XY Table	

Extra Attachment

Numerical Control (NC) XY Table

Work Table 600x240mm

X-Y Stroke 350/150mm

* This model is now also manufactured in India by **amt** under Licence from **MAXION Jänsch & Ortlepp GmbH**



GANG DRILLING MACHINES



- The AMT multi-head units are mounted on box - type stands and can be supplied with 2, 3, 4, 5 or 6 units.
- The heavy torsion resistant fabricated table has 2 T-slots.
- It also has a storage shelf.
- The electrical equipment is clearly laid out in a terminal switch box
- Alternative heads :
BT6, DB 23/28, TDB 23/28,
BS 25 AVST, TDB 23/28 VFD
- Electrical coolant unit at extra cost.
- Other accessories see back page.





AUTOMATIC DRILLING WITH NC X-Y TABLE

- X-Y travel -350/150 mm
- Work area size - 600x250 mm
- Operation through NC programming with operator friendly controller.
- In single program we can drill upto 25 nos of holes.
- Three different sizes holes can be drilled in single program.
- Compact XY table design.
- Touch Screen option is also available.
- Manual mode is also available.
- Weight carrying capacity of table - 75 Kg
- Maximum spindle to table distance - 380mm

ACCESSORIES

Keyless Drill Chuck



Cabinet Box



External Coolant System



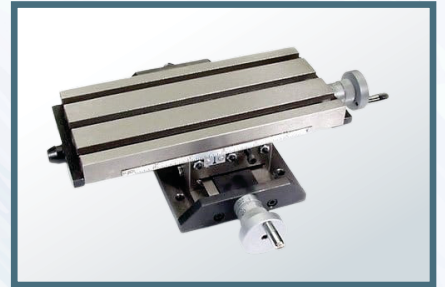
Anti vibration Mounts



Clamping Vice



Cross Table



Manufactured by



ahire machine tools pvt. ltd.

Add : D1/18, MIDC, Ambad, Nashik, Maharashtra, India. 422010

Contact No. : +91 9922448079, +91 9130099422

Email : sales@amtplindia.com Web : www.amtplindia.com