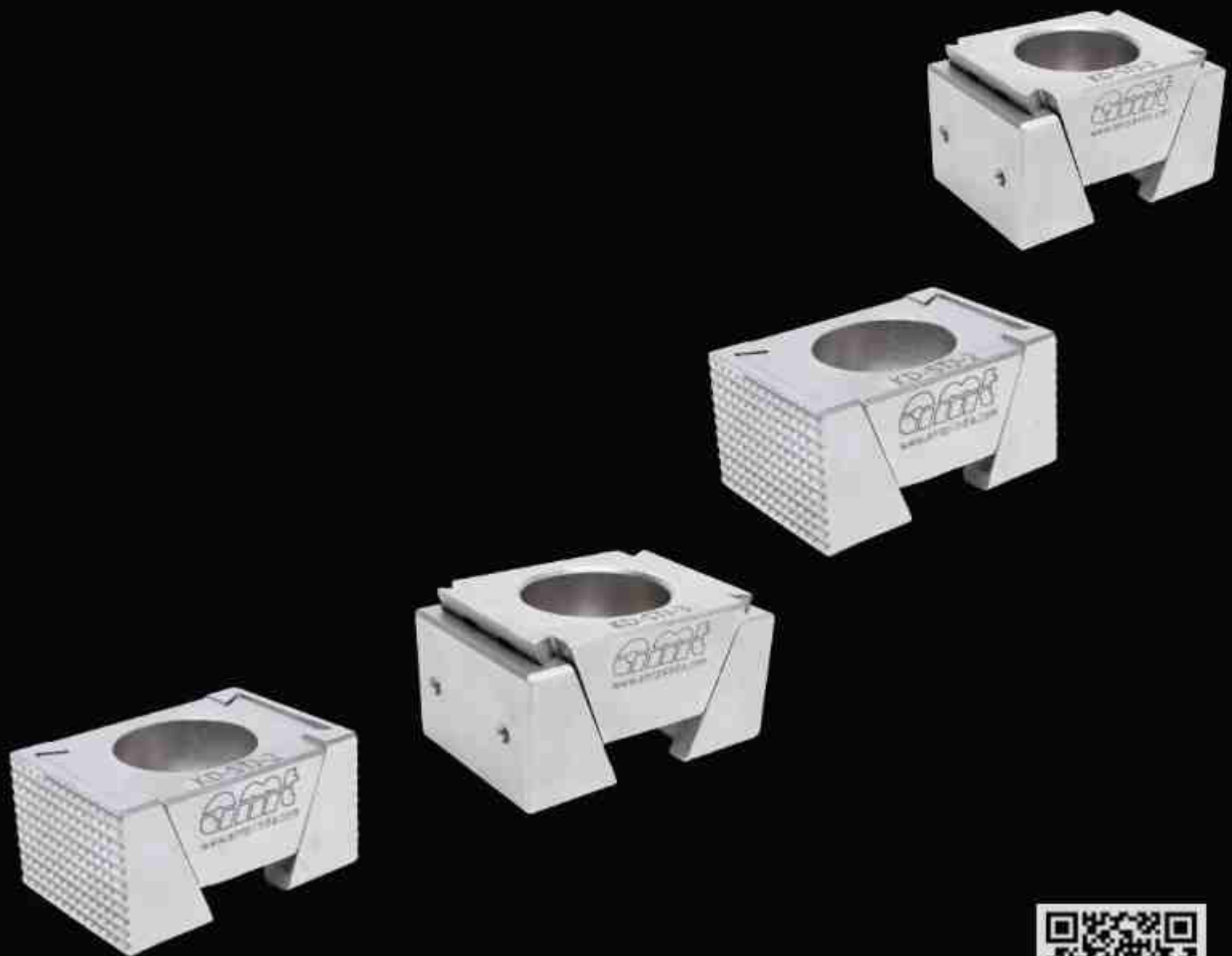


WORKHOLDING WEDGE CLAMPS

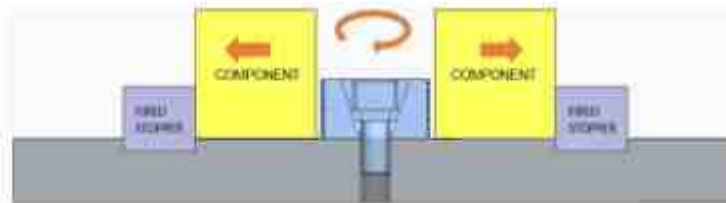


Quality Creates Trust....



AMT Wedge Clamp Working Principle :

Wedge clamp functions on the principle that It expands as cap screw is tightened down which moves center clamping wedge downwards and simultaneously both jaws slide outwards and clamp the workpiece firmly. Tightening and loosening of cap screw will return the center clamping wedge over an internal return spring to its original position so the clamping method is very effective and time saving.



AMT Wedge clamp Scope of application

- Generic & dedicated fixturing for VMC, HMC & 5 axis machines.
- For designing fixtures for inspection & quality labs.

AMT Wedge clamp Product Features

- Tool grade steel body.
- Through hardened with 30-35 HRC.
- Electroless Nickel Plating.
- Maximum clamping force up to 50KN.
- Expands evenly and apply balanced workholding pressure.



- Free tool access to the workpiece.
- Cross wedge structured design clamps workpiece firmly.
- Light in weight with quick setup time.
- Ideal for multiple clamping but also suitable for individual clamping also.

**Model KD-STJ (Standard Jaws) :**

Wedge clamp is provided with smooth clamping face & fastening screw thread M4 to accommodate various additional customized jaws of various shapes according to workpiece geometry.

Model KD-SJ (Serrated Jaws) :

Wedge clamp with serrated jaws is a general purpose clamp. Serrations on both sides of the jaws hold workpiece firmly in any condition as they create high friction

**Model KD-MJ (Machinable Jaws) :**

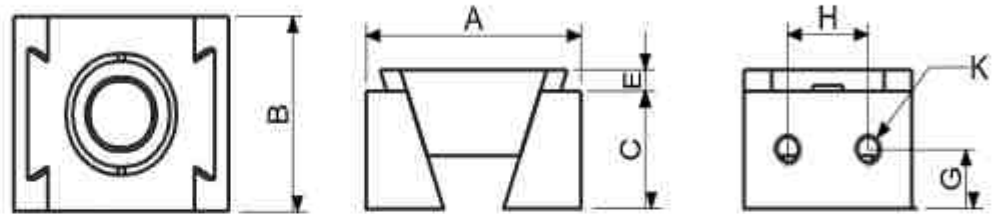
Wedge clamp is provided with additional material on both sides of the jaws which can be machined to precise specifications for accurately aligning the workpiece during the operation.

AMT Wedge Clamps Technical Specifications



Model KD-STJ

AMT Wedge Clamp With Standard Jaws

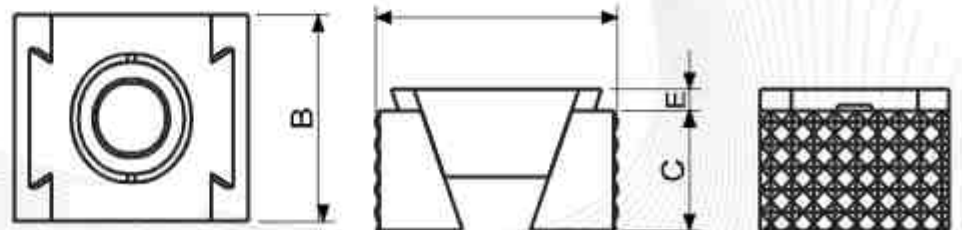


MODEL	A		B	C	E	G	H	K	CLAMPING SCREW DIN	TIGHTENING TORQUE, Nm	CLAMPING FORCE, kN	WEIGHT in g approx.	HARDNESS HRCmin.	
	optimum	max.												
KD-STJ-1	32	34	36	25	15	2.5	7.5	12	4xM4	M8	20	15	70	30-35
KD-STJ-2	42	45	49	30	23	4.3	11.5	12	4xM4	M12	65	30	165	30-35
KD-STJ-3	56	60	64	40	30	5	15	24	4xM4	M16	120	50	390	30-35



Model KD-SJ

AMT Wedge Clamp With Serrated Jaws



MODEL	A		B	C	E	CLAMPING SCREW DIN	TIGHTENING TORQUE, Nm	CLAMPING FORCE, kN	WEIGHT in g approx.	HARDNESS HRCmin.	
	optimum	max.									
KD-SJ-1	32	34	36	25	15	2.5	M8	30	15	70	30-35
KD-SJ-2	42	45	49	30	23	4.3	M12	65	30	165	30-35
KD-SJ-3	56	60	64	40	30	5	M16	120	50	390	30-35

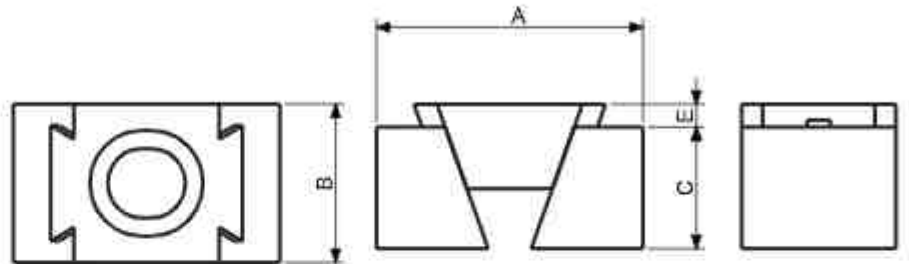
Note : 1) Use of torque wrench is advisable

2) We reserve the rights for any further changes in technical specifications



Model KD-MJ

AMT Wedge Clamp With Machinable Jaws



MODEL	A			B	C	E	CLAMPING SCREW DIN	TIGHTENING TORQUE, Nm	CLAMPING FORCE, kN	WEIGHT in g approx.	HARDNESS HRCmin.
		optimum	max.								
KD-MJ-2	52	55	59	30	23	4.3	M12	85	30	220	25-28
KD-MJ-3	66	70	74	40	30	5	M16	150	50	490	25-28

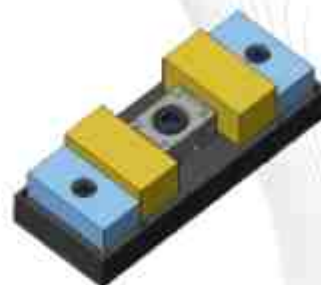
Note : 1) Use of torque wrench is advisable

2) We reserve the rights for any further changes in technical specifications

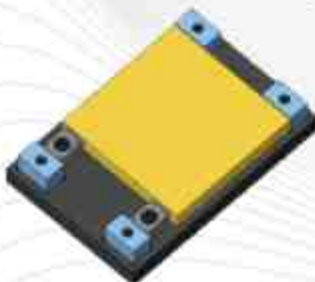
Installation Methods



Single clamping of small component



Multi clamping of small component.



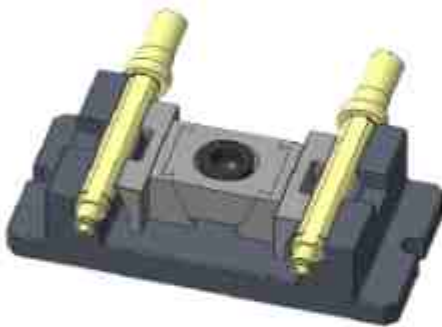
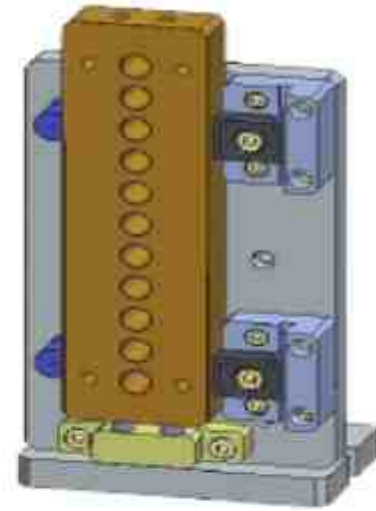
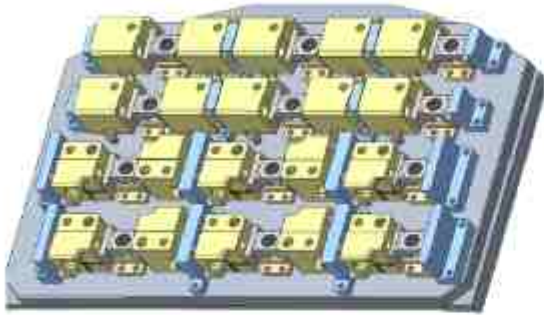
Single clamping of large component



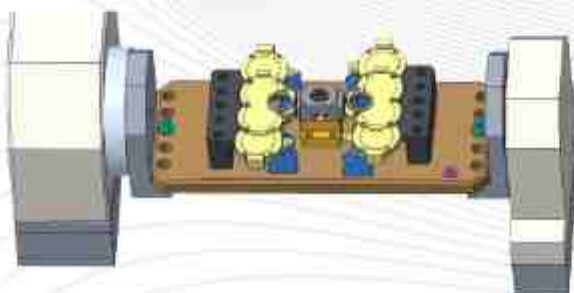
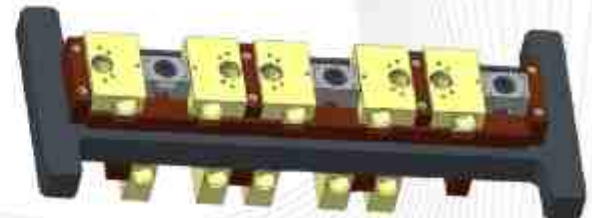
Multi clamping of long component

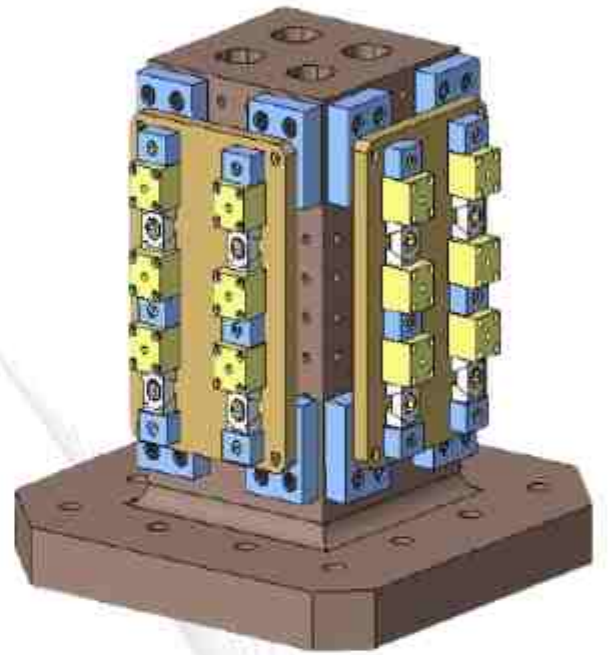
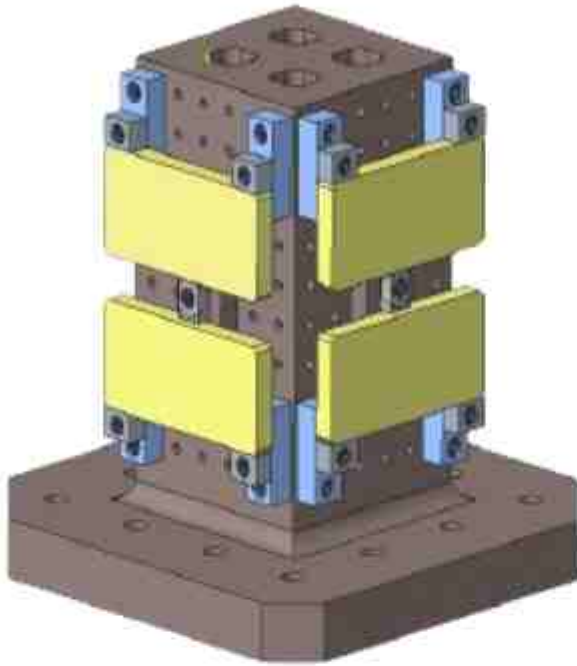
Applications

3-Axis Applications



4-Axis Applications







MANUFACTURED BY



PRODUCTIVITY IMPROVEMENT SOLUTIONS

Ahire Machine Tools Pvt. Ltd

Corp. Off. : D1/18, MIDC, Ambad, Nashik. 422010

Contact : +91 9922448079, +91 9922413270, +91 9130099422

Website : www.amtplindia.com | Email : sales@amtplindia.com
